

HUNTERS®

HERE TO GET *you* THERE



Maltings Close

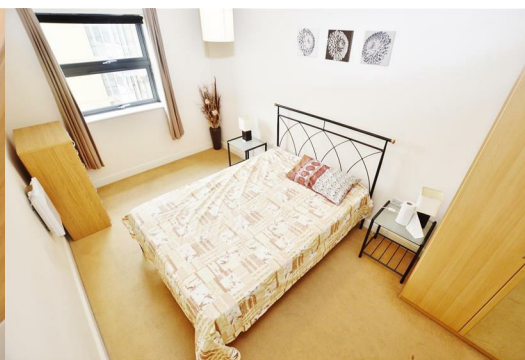
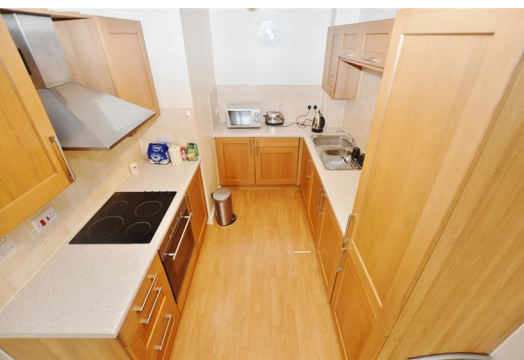
London, E3 3TD

Guide Price £300,000



Hunters are proud to present this beautiful one bedroom apartment set within this highly sought after development close to Bromley-By-Bow. This spacious apartment boast from a bright and airy open plan living kitchen area with doors to a Juliet balcony. Other benefits include a large double bedroom, luxury bathroom suit and is offered for sale with no onward chain.

The property is located moments away from Bromley-By-Bow underground and Bow DLR which offers fabulous transport links into both the City and Docklands, an internal viewing is highly recommended.

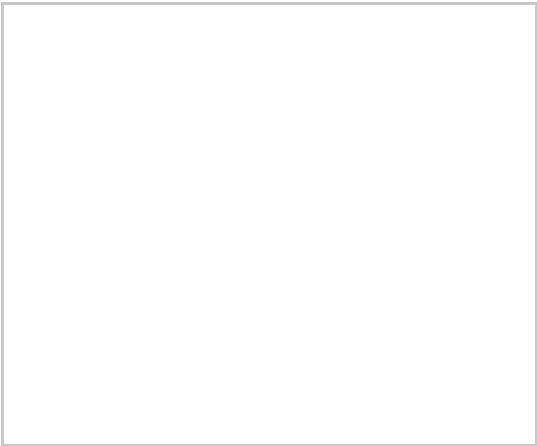


TENURE - LEASEHOLD

LOCAL AUTHORITY - TOWER HAMLETS

COUNCIL TAX BAND - C

Area Map



Floor Plans



Energy Efficiency Graph



These particulars are intended to give a fair and reliable description of the property but no responsibility for any inaccuracy or error can be accepted and do not constitute an offer or contract. We have not tested any services or appliances (including central heating if fitted) referred to in these particulars and the purchasers are advised to satisfy themselves as to the working order and condition. If a property is unoccupied at any time there may be reconnection charges for any switched off/disconnected or drained services or appliances - All measurements are approximate.

THINKING OF SELLING? If you are thinking of selling your home or just curious to discover the value of your property, Hunters would be pleased to provide free, no obligation sales and marketing advice. Even if your home is outside the area covered by our local offices we can arrange a Market Appraisal through our national network of Hunters estate agents.